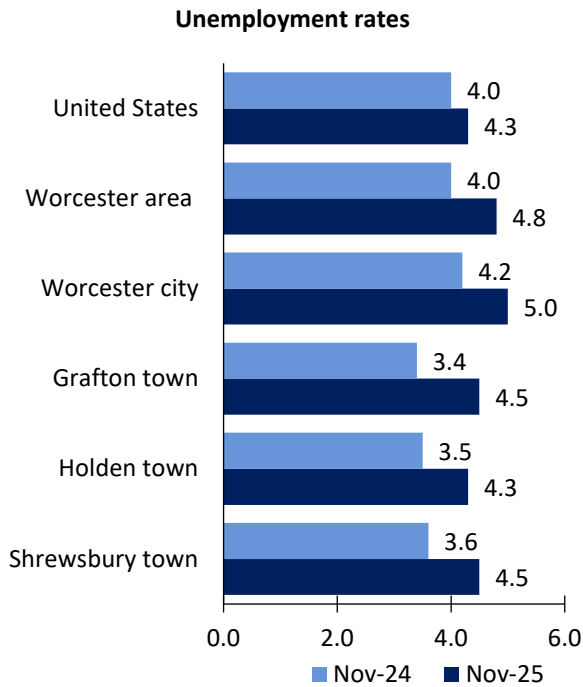


# Worcester Area Economic Summary

Updated January 20, 2026

This summary presents a sampling of economic information for the area; supplemental data are provided for regions and the nation. Subjects include **unemployment, employment, wages, prices, spending, and benefits**. All data are not seasonally adjusted and some may be subject to revision. Area definitions may differ by subject. For more area summaries and geographic definitions, see <https://www.bls.gov/regions/economic-summaries.htm>.

## Unemployment rates for the nation and selected areas



Source: U.S. BLS, Local Area Unemployment Statistics.

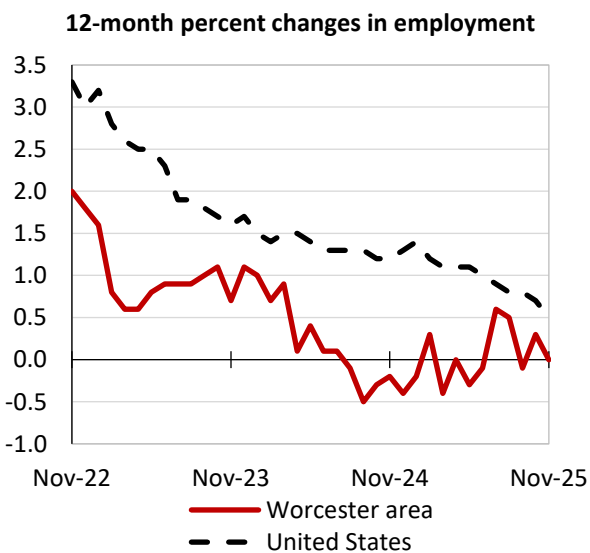
## Average weekly wages for all industries by county

Worcester area, second quarter 2025  
(U.S. = \$1,436; Area = \$1,391)



Source: U.S. BLS, Quarterly Census of Employment and Wages.

## Employment on nonfarm payrolls and employment by major industry sector, over-the-year changes



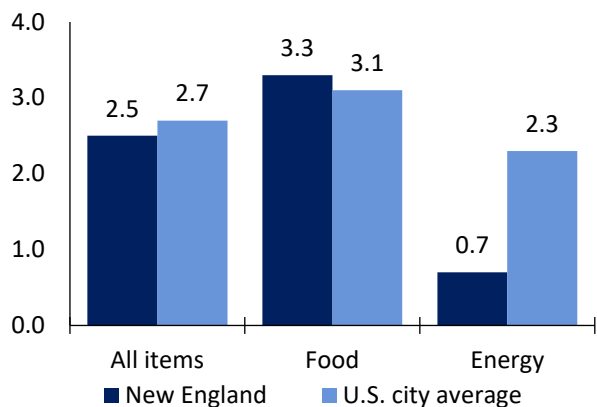
Worcester area employment (number in thousands)	Nov. 2025	Change from Nov. 2024 to Nov. 2025	
		Number	Percent
Total nonfarm	363.3	0.0	0.0
Mining, logging, and construction	17.9	0.2	1.1
Manufacturing	34.7	-0.2	-0.6
Trade, transportation, and utilities	60.9	-1.2	-1.9
Information	2.9	-0.1	-3.3
Financial activities	15.6	0.0	0.0
Professional and business services	40.3	0.4	1.0
Education and health services	90.9	2.6	2.9
Leisure and hospitality	28.5	-1.2	-4.0
Other services	11.0	0.1	0.9
Government	60.6	-0.6	-1.0

Source: U.S. BLS, Current Employment Statistics.



Prices paid by urban consumers for selected categories, over-the-year change

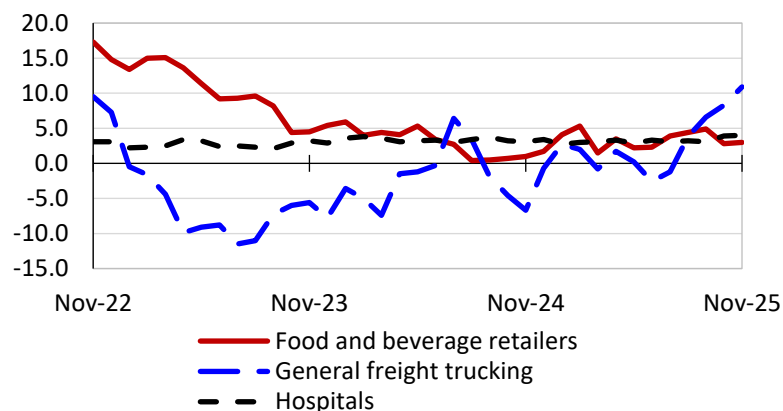
12-month percent change in CPI-U, December 2025



Source: U.S. BLS, Consumer Price Index.

Selling prices received by producers for selected industries nationwide, over-the-year change

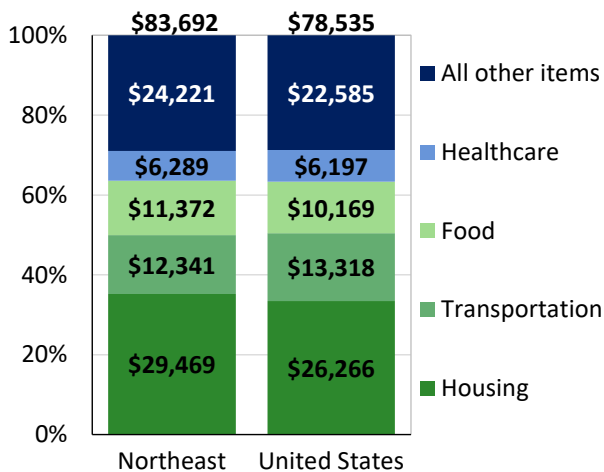
12-month percent changes in PPI



Source: U.S. BLS, Producer Price Index.

Average annual spending and percent distribution for selected categories

Average annual expenditures, 2024



Source: U.S. BLS, Consumer Expenditure Survey.

Average hourly wages for selected occupations, May 2024

Occupation	Worcester area	United States
All occupations	\$34.13	\$32.66
Biochemists and biophysicists	62.80	55.56
Social and community service managers	39.08	41.39
Firefighters	33.04	30.72
Machinists	29.58	27.59
Paper goods machine setters, operators, and tenders	23.89	24.88
Home health and personal care aides	19.90	16.82

Source: U.S. BLS, Occupational Employment and Wage Statistics.

Employer costs per hour worked for wages and selected employee benefits by census division

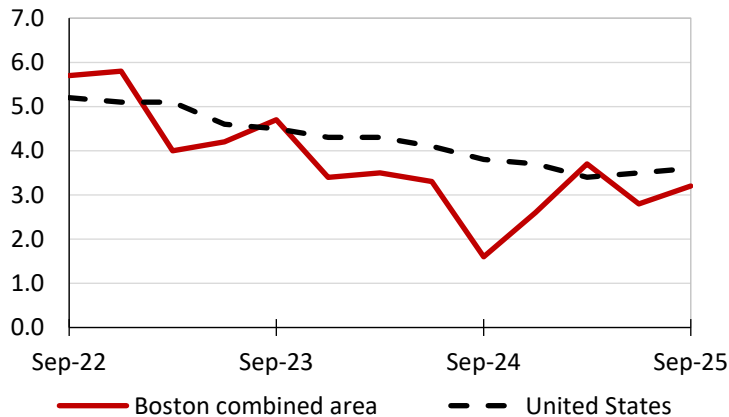
Private industry, June 2025	New England	United States
Total compensation	\$56.51	\$45.65
Wages and salaries	38.84	32.07
Total benefits	17.67	13.58
Paid leave	4.99	3.44
Vacation	2.59	1.75
Supplemental pay	2.01	1.84
Insurance	4.64	3.44
Retirement and savings	2.17	1.54
Legally required benefits	3.86	3.31

Map of Census Regions and Divisions

Source: U.S. BLS, Employer Costs for Employee Compensation.

Changes in wages and salaries over-the-year

12-month percent changes in ECI



Source: U.S. BLS, Employment Cost Index.

